



Wheeldon Way, Hulland Ward, DE6 3FZ

With a new roof to the upper portion of the home in Spring 2026 and having been significantly upgraded in 2024, this pristine family home has magnificent panoramic views of the surrounding countryside. With an elevated decked seating area, off-road parking, south-facing garden, beautiful inglenook fireplace and a high quality new kitchen, this is a home that is 'future-proofed' for years to come.

On the ground floor, the sleek modern kitchen leads through to a spacious, wide dining room and lounge with lots of south-facing windows flooding the rooms with natural light. There is a ground floor master suite with double bedroom and en-suite shower room. To the first floor are two double bedrooms and the family bathroom.

At the front of the home, the gravel driveway currently has off-road parking for one vehicle. There is also a large decked terrace with plenty of room for seating and outdoor dining. At the rear, the well-designed garden includes a lawn, gravel area and two sheds.

Hulland Ward has a primary school, petrol station, farm shop, florist and the popular Nags Head pub. The towns of Ashbourne and Belper are easily accessible along the A517, which runs directly through the village. Carsington Water - with sailing, trails and a visitor centre - is only 4 miles away. The Derbyshire Dales and Peak District offer lots of walking and cycling routes, whilst the market towns of Matlock and Bakewell and the delights of Chatsworth House are within a 40 minute drive.

- Elevated panoramic 180-degree views
- Modern 3 bedroom, 2 bathroom home
- Cavity wall insulation August 2024
- New kitchen fitted in February 2024
- Off-road parking
- Enclosed south-facing garden with dining patio
- New fascias, guttering and downpipes in February 2024
- Immaculately-presented throughout
- Elevated decked seating area with great views
- New roof to upper section of house, Spring 2026

£325,000

Wheeldon Way, , Hulland Ward, DE6 3FZ

Front of the home

This attractive modern home has a gravel drive with space for one vehicle to park. A low level dry stone wall has a neat row of cherry laurel trees planted above. Steps on the right lead up to a paved terrace in front of the home. A modern elevated deck has plenty of space for outside dining and relaxing, with panoramic 180-degree views to the rolling Derbyshire Dales countryside.

There is an outside tap and power points - and access each side of the home to the rear garden. Enter the home through a part-glazed composite front door with chrome handle and letterbox.

Kitchen

19'4" x 7'2" (5.9 x 2.2)

Providing an impressive entrance to the home, this long galley kitchen was fitted in February 2024 and has a large number of contemporary fitted cabinets and a tiled floor. The U-shaped worktop has patterned tiled splashbacks, with two large north-facing windows providing stunning views. There are lots of cabinets beneath the worktop, including space and plumbing for a washing machine and tumble dryer.

An integral black 1.5 sink and drainer has a chrome mixer tap, whilst at the far end of the kitchen is a four-ring Zanussi gas hob with deep pan drawers below. As the worktop continues around, there are more high and low cabinets. To the right are several full-height cabinets - including one that houses a modern Worcester boiler - followed by a chest-height Zanussi oven and built-in microwave, another tall cabinet and full-height fridge-freezer.

The kitchen has a radiator, two ceiling light fittings and the main access to the loft is through the kitchen. There is a loft ladder and the loft is mostly boarded. A white Mexicana door through to the Lounge and Dining Room.

Dining Room

10'9" x 10'9" (3.3 x 3.3)

The dining room forms the right-hand section of the open plan lounge-diner and is conveniently situated beside the kitchen. There is a wide south-facing window looking out to the rear garden and plenty of room for a 6-seater dining table. The room has a heritage-style radiator, ceiling light fitting, skirting board and real wood flooring. There is space here for a bookcase or sideboard - and a door on the right into the ground floor master suite.

Lounge

17'4" x 15'5" (5.3 x 4.7)

Natural light pours in through the wide south-facing bay window and fully-glazed French doors to the rear garden. The focal point of this room is the huge brick inglenook fireplace with substantial oak beam above. The fireplace houses a gas fire and has lots of space on the hearth for decorative items.

A wide alcove on the left has space for a TV cabinet. The room also has a high beamed ceiling with distinctive oak pillar from floor to ceiling, attractive real wood flooring, a heritage radiator, ceiling light fitting and stairs leading up to the first floor.

Bedroom One

16'4" x 13'5" (5 x 4.1)

The large ground floor master suite includes this spacious double bedroom and an en-suite shower room. The L-shaped bedroom is carpeted and has two wide north-facing windows. It's a really lovely place to wake up, with tremendous far-reaching views. The space on the right has ample room for a double bed, leaving lots of space in the remainder of the room for wardrobes and additional furniture. There are two ceiling light fittings, a radiator and door to the en-suite.

En-Suite Shower Room

8'6" x 4'7" (2.6 x 1.4)

We love the huge walk-in shower, which has a reinforced glass screen and floor-to-ceiling tiled surround. The mains-fed shower has a rainforest shower head. To the right, the substantial ceramic sink has a swan neck chrome mixer tap and there is a ceramic WC with integral flush. The room also includes a chrome vertical heated towel rail, shaving point, tiled shelf, extractor fan and recessed ceiling spotlights.



Stairs to first floor landing

Carpeted stairs with a banister on the left lead up to the roomy landing, with a Velux window and ceiling light fitting above. Mexicana doors lead into two double bedrooms and the family bathroom.

Bedroom Two

12'9" x 9'2" (3.9 x 2.8)

Located at the front of the home, this room has elevated panoramic views to the north of the rolling countryside far beyond the village boundary. There is a radiator, ceiling light fitting and loft hatch.

Bathroom

6'6" x 5'10" (2 x 1.8)

The large jacuzzi bath has a pivoting glass screen, floor-to-ceiling tiled surround and Triton electric shower over. A ceramic sink with chrome mixer tap sits atop a fitted vanity unit and there is a capsule WC. The bathroom also includes a chrome vertical heated towel rail, recessed ceiling spotlights, Velux window, extractor fan and ceramic tiled floor.

Bedroom Three

9'6" x 9'2" (2.9 x 2.8)

With linoleum flooring, this sunny south-facing room has pleasant views over the rear garden. A recessed fitted cupboard in the left corner has a pivoting wooden door and shelving. This double bedroom has a radiator and ceiling light fitting.

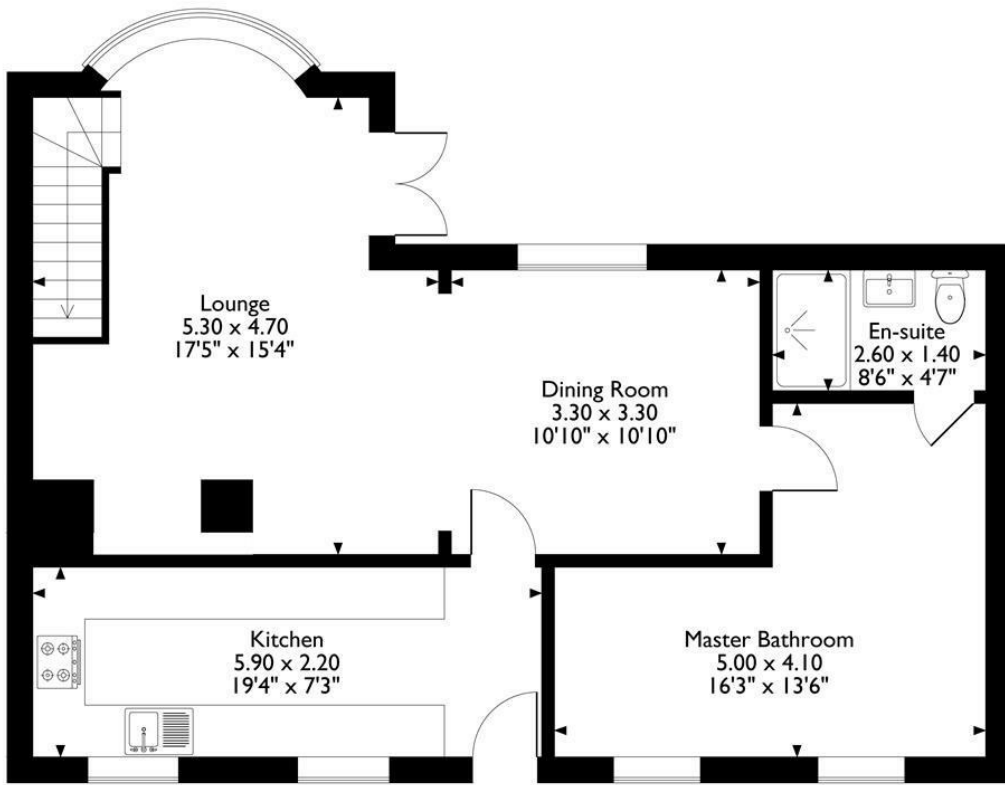
Rear Garden

We love this quiet sanctuary at the rear of the home. It is perfectly south-facing, so gets the sun all day long. Accessed via paths on both sides of the home (each with lockable gates), the home can also be accessed through the French doors in the lounge.

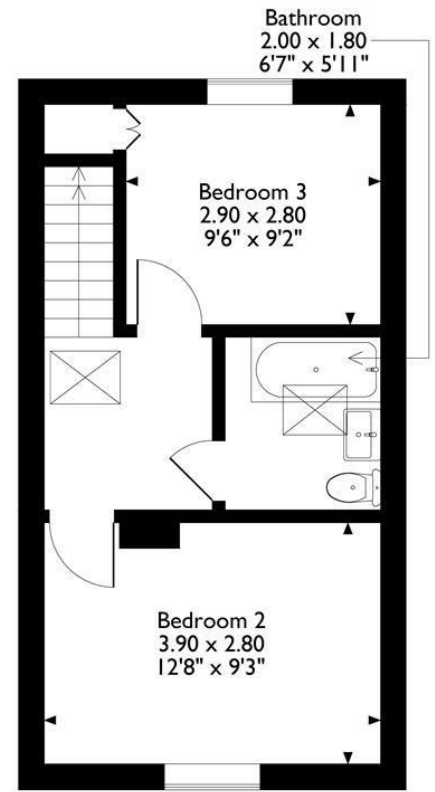
At ground level is a paved patio with space for seating and storage. There are external wall lights here. Five stone steps with inset lights lead up to the main garden, where a wide gravel area has inset tree trunk stepping stones to two large sheds in the top corners. A neat rectangular lawn on the right is bordered by raised gravel flower beds. The garden is bordered on three sides by a low brick wall, with timber fencing above on the left and rear, with a pretty ivy covering. This is an easy-maintenance garden perfect for relaxing and dining in from breakfast time through to sociable evening drinks.



19 Wheeldon Way
 Approximate Gross Internal Area
 101 Sq M / 1087 Sq Ft



Ground Floor



First Floor

Please note that the location of doors, windows and other items are approximate and this floorplan is to be used for illustrative purposes only. Unauthorized reproduction is prohibited.



Energy Efficiency Rating		Current	Potential
Very energy efficient - lower running costs			
(92 plus) A			
(81-91) B			
(69-80) C			
(55-68) D			
(39-54) E			
(21-38) F			
(1-20) G			
Not energy efficient - higher running costs			
England & Wales			

Environmental Impact (CO ₂) Rating		Current	Potential
Very environmentally friendly - lower CO ₂ emissions			
(92 plus) A			
(81-91) B			
(69-80) C			
(55-68) D			
(39-54) E			
(21-38) F			
(1-20) G			
Not environmentally friendly - higher CO ₂ emissions			
England & Wales			

10 MARKET PLACE, WIRKSWORTH, DERBYSHIRE, DE4 4ET
 TELEPHONE: 0330 122 9960 + 07704 575743

REGISTERED ADDRESS: SUNNYSIDE COTTAGE, MAIN STREET, KIRK IRETON, DERBYSHIRE, DE6 3JP
 REGISTERED IN ENGLAND. COMPANY NUMBER: 11836315